

AE-T0003

TELTRON TUBE: MALTESE CROSS

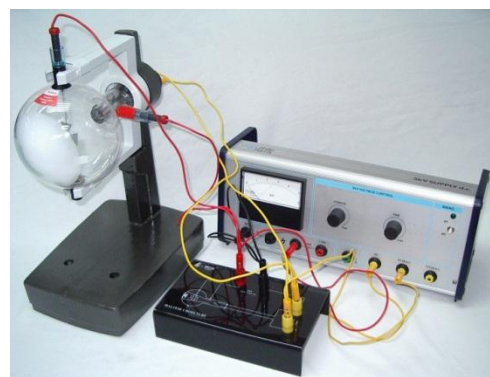
Item number: U19153 [1000649]

FEATURES:

- To demonstrate that electrons travel in straight line
- To prove that electrons are particles which carry a negative charge and can be deflected by magnetic sources

SPECIFICATIONS:

- Max. filament voltage: 6.3 V AC
- Max. anode voltage: 5 kV
- Anode current: approx. 0.1 mA at 4 kV



***Universal stand, circuit module and E.H.T power supply are sold separately**